



# GAT MONTHLY MEMBERSHIP PROGRESS REPORT

Results as of: 3/31/2021

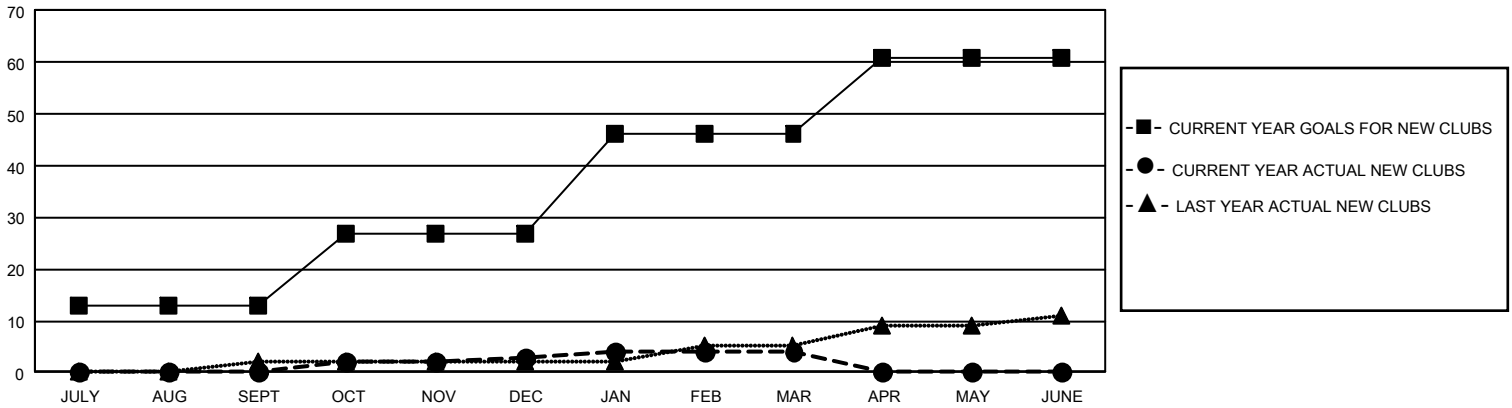
## GAT Constitutional Area 5 - Japan

REPORT DOES NOT INCLUDE CLUBS IN UNDISTRICTED AREAS.

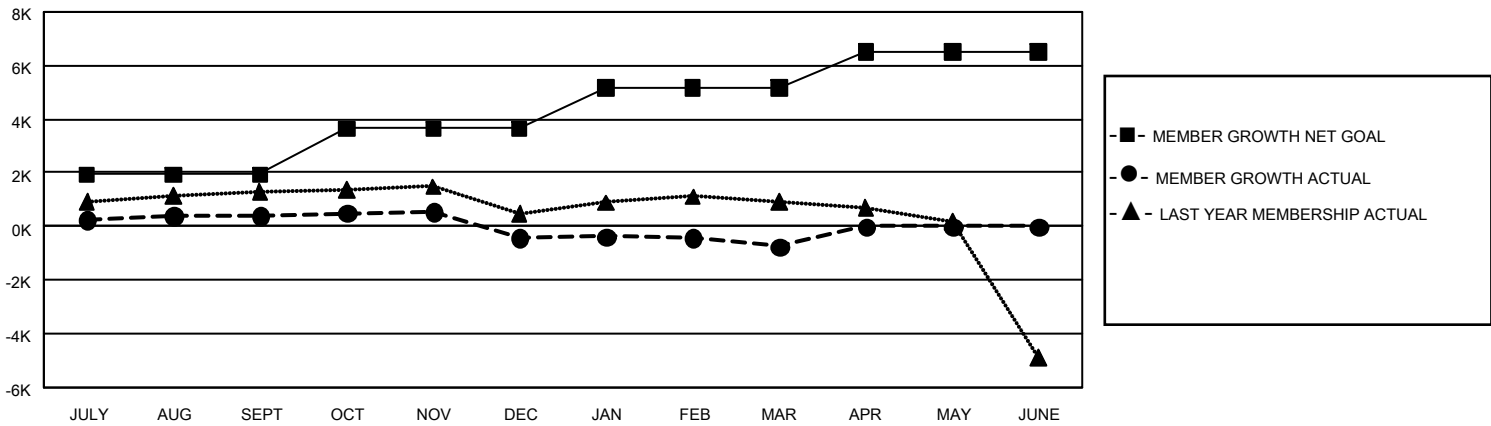
Clubs			
RESULTS FOR 2020-2021			
QUARTER	NEW CLUB GOAL	NEW CLUBS	DROPPED CLUBS
JULY/AUG/SEPT	39	0	5
OCT/NOV/DEC	42	3	12
JAN/FEB/MAR	57	1	3
APR/MAY/JUNE	45	0	0

Members			
RESULTS FOR 2020-2021			
QUARTER	MEMBER GROWTH NET GOAL	MEMBER GROWTH ACTUAL	DROPPED MEMBERS ACTUAL (including transfers)
JULY/AUG/SEPT	1924	2,283	1,798
OCT/NOV/DEC	1716	1,380	2,107
JAN/FEB/MAR	1538	1,128	1,397
APR/MAY/JUNE	1337	0	0

GOALS AND ACTUAL NEW CLUBS CUMULATIVE



GOALS AND ACTUAL MEMBERS CUMULATIVE



<b>DROPPED CLUBS: 20</b>	1,683 CLUBS OF 2,912 ADDED 1 OR MORE NEW MEMBERS  <a href="#">CLICK HERE FOR CUMULATIVE MEMBERSHIP DATA</a>	<b>GENDER DISTRIBUTION</b>	
		MALE            80,339 (76.17%) FEMALE         25,131 (23.83%)	TOTAL FAMILY UNIT MEMBERS            37,892  FAMILY MEMBERS PAYING HALF DUES            20,870
<b>DROPPED MEMBERS</b>			
DECEASED            676 CLUB CANCELLED        49 OTHER                 4,575 <b>TOTAL</b> 5,300			